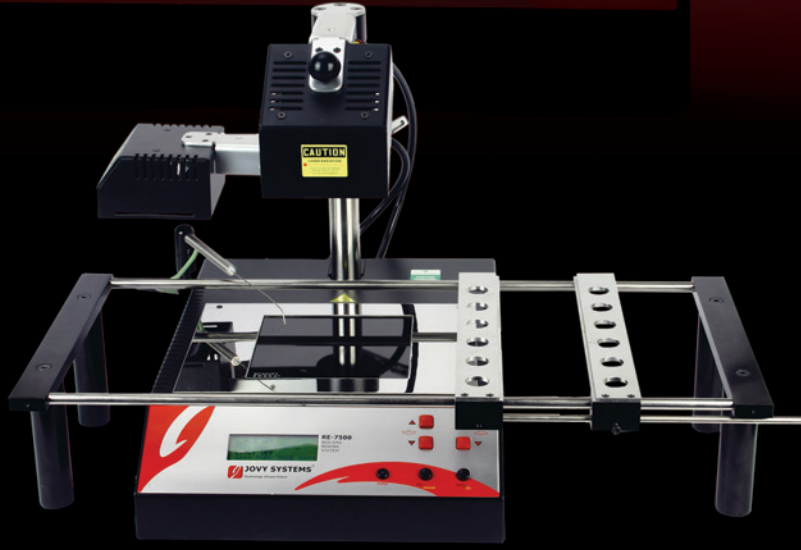
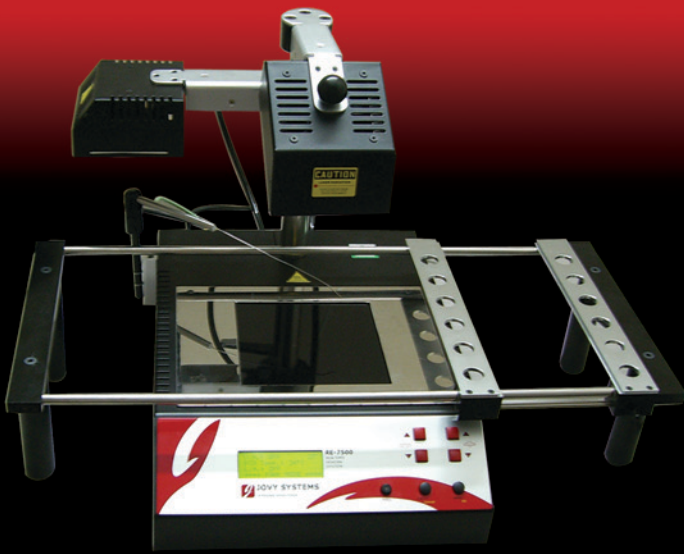




JOVY SYSTEMS

RE-7500
BGA Rework System





Technology Versus Future

The Jovy RE-7500 BGA Rework System removes and reflows all SMD components, including BGA, CBGA, CCGA, CSP, QFN, MLF, PGA, and epoxy underfilled μ BGA's. The System also removes plastic parts effortlessly, with no damage, using Jovy Safe-Heat[®] Technology. The Jovy Systems RE-7500 BGA Rework System comes complete with an onboard pre-heater, a built in air pick, on-board laser sighting, a built in temperature sensor with digital monitoring, and an on-board cooling system.

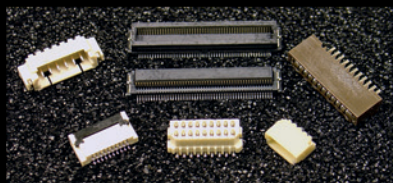
IR Technology Vs Hot Air

Hot air convection systems offer good reliability and repeatability, but great care must be taken in tip and barrier selection to ensure that adjacent components are not damaged by air flow. Hot Air systems require greater expertise to position the nozzle to obtain the proper convective atmosphere. However, at the same time, escaping hot air can overheat or damage adjacent components. Jovy IR Technology produces safe heat[®], without disturbing or damaging nearby components.

Plastic or Heat Sensitive Components

Hot air systems are described as sudden heat sources, which cause deformation in plastic SMD sockets which are sensitive to high temperature heat sources.

Dark IR is an ideal use for removing and installing plastic parts and components. Used properly, and damage to these heat sensitive parts will be avoided.

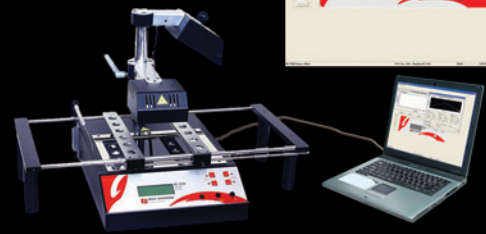
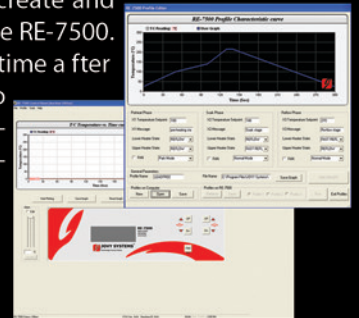


Hot & Cold Spots

Hot air systems where nozzles are required produce hot and cold spots on PCB's. IR produces guaranteed uniform heat to create a homogeneous temperature of the repair area, which reduces thermal shock and prevents any occurrences of hot and cold spots.

RE-Jovy Soft[®]

The RE-7500 Rework System can connect to your laptop or PC, which allows remote operation of all functions. This interface also incorporates profiles that you can create and edit, and then upload directly to the RE-7500. This allows for consistent results time after time. Profiles are an easy way to adjust all phases of the reflow process, including pre-heating, soaking, reflowing and cooling stages.



Applications

- Medium & Large Scale Service Centers
- Mobile electronics and communications systems devices
- Cellular, PDA's, Handheld's, PC motherboards
- LAN devices, network nodes and military equipment
- Portable medical equipment

The Jovy RE-7500 system excels in the removal of all SMD devices, and is the optimal tool for reballing BGA IC's. The Jovy Systems RE-7500, with its low cost and high quality, is the ideal BGA Reworking System.

Specifications

Top heater Power	300W
Pre heater Power	600W
Voltage/frequency	220 Volts 50/60 Hz
Max board Size	13.77 in. x 17.71 in.
Gross weight	35 Lbs

ACCESSORIES



see our brochure or visit us online

AVRepair, Inc.
jovy.avrepair.com
888-45-Fix-it